



THE BINGHAM FARMS POST

Fall, 2015

COUNCIL PASSES NEW ZONING ORDINANCE

Over the years, the Village Council has been very careful regulating requests from residents to erect fences and/or walls, many in the front yard.

The problem is that at some point in time, these structures go unattended and the Village has to force the resident to repair or remove the structure.

In the past year, the Council also has been asked to approve gates, most often after installation.

The Village has from the beginning worked to preserve its open character and natural features. In the Village Charter, the Preamble states "...wishing to preserve our simple rural way of life and the character of our neighborhood..."

The Village's Design and Review Board was created to "preserve, protect and enhance the ecologically and

historically unique environment and aesthetic charm of the village..."

The Council, in an effort to preserve the open concept upon which the Village was created, has just adopted a zoning ordinance amendment that prohibits any installation of a fence, wall or gate. The only exceptions are for invisible fences, dog runs and fences surrounding a pool.



It is highly advisable that the Village office be contacted if there is any consideration of erecting these features.

A resident will have to obtain a zoning variance prior to erecting

Cont. on Pg. 7

LARGE ITEM PICK UP SCHEDULED

It's TIME again. The Village's semi-annual large item pick up will take place on Thursday, October 15, 2015.

The purpose of this pick up is to give residents the opportunity to dispose of large items such as sofas, chairs, washing machines and similar large items without charge.

All you have to do is bring the items to the street, right along with your regular trash. Car Trucking will haul it away. Then it's gone...for good. Better yet, there are no extra charges.

The contractor also picks up freezers and refrigerators if doors and the Freon are removed prior to placing them at the street. Car Trucking is not licensed to remove Freon or transport appliances that have Freon in them.

DTE now offers appliance recycling of old WORKING refrigerators and freezers. They recycle 95% of these old units and that's good for the environment.

If you meet certain requirements, you could get a check too. To find out more call DTE at 1.866.796.0512

There are also several companies who remove Freon for a fee.

1. John R. Appliance, located at 26529 John R in Madison Heights, 248.541.8696.
2. Mr. B's Hauling, located at 27453 Dover Ave. in Warren, 586.873.1264.
3. 888-TRASH-IT (888.872.7448).

The large item pick up is not an opportunity to clean out the attic or basement, or for residents cleaning out their home prior to moving. Car Trucking has sole discretion as to the quantity they will take.

If you aren't sure whether an item is acceptable, call Car Trucking at 586.791.8480.

WINTER MAINTENANCE

One of the major problems the Village faces each year is with snow removal, especially residents and/or their contractors who plow snow from the driveway across the street onto a neighbor's property. What remains are called snow rows.

These snow rows can freeze and cause problems with the Village's snow plow contractor, pedestrians and public safety vehicles.

This procedure is against Village ordinance. Last year, Council passed an ordinance that prohibits snow to be deposited on another property, public or private. Violations can result in ticketing.

It is important that residents inform their private snow removal contractors that the snow that falls on your property stays on your property.



The Village will continue its contract with Johnson Landscaping to provide snow removal services and salt applications on Village roads.

The snow plows are called out as soon as 2 inches have fallen on the roads. In heavy storms, the contractor will plow several times to keep the roads passable.

The Village will request additional work when conditions warrant. The decision to plow and salt the roads is based on the assessment of the police department. Similar to last year, the Village will salt the public

Cont. on Pg. 5

VILLAGE COUNCIL MEETINGS

October 26
November 23
December 21

Meetings begin at 7:30 p.m.

WEST NILE VIRUS THE BATTLE INTENSIFIES

It just won't go away; the West Nile Virus that is. In September an 81 year old Oakland County woman died from the virus. Also in September, a blood donor tested positive for the virus. And earlier this summer, a crow tested positive and the virus was found in some mosquito pools.

These events make it so important to take precautions that will limit the number of human infections.



In 2014, there was just one case of a human infected with WNV.

In 2013, there were 36 human cases reported in Michigan with 4 in Oakland County.

The incubation period from bite to symptoms ranges from 2 to 14 days. Most people infected with West Nile do not show any symptoms. Twenty percent, however have flu-like symptoms, including fever, fatigue, headache and muscle or joint pain. Less than 1% of infected humans become severely ill.

The fact that people are still coming down with the virus, shows that West Nile Virus remains a problem. There are still plenty of mosquitoes carrying the virus. Prevention measures do work. The best advice — keep doing what you are doing.

The Oakland County Health Department recommends that folks take steps to:

- * Reduce areas where mosquitoes breed.
- ♦ Repel to protect against mosquitoes,

and

- ♦ Report potential mosquito breeding areas.

Other measures that can reduce the risk of contracting the virus include:

- ♦ Repair all holes in window and door screens to keep mosquitoes out of your home.
- ♦ Empty water from mosquito breeding sites such as buckets, barrels, cans and old tires.
- ♦ Avoid being outdoors when mosquitoes are most active (dawn and dusk).
- ♦ Wear light colored, long-sleeved shirts and long pants when outdoors.
- ♦ Apply insect repellants that contain DEET to exposed skin or clothing. Always follow the manufacturer's directions for use. Do not apply repellent containing DEET on children less than two years of age.

If you find any dead birds, report your findings to the Oakland County Health Division Hotline at 1-877-377-3641. Then properly dispose of the bird. Wear gloves to protect yourself from direct contact with the bird.

For updates on West Nile Virus, log on to the state or county websites at:

www.michigan.gov/westnilevirus

or

www.oakgov.com.

NEXT IS THE PLACE TO BE

Next – Your Place to Stay Active and Connected is a nonprofit community center for anyone 50 and better, located at 2121 Midvale in Birmingham.

Next is your place for art: We have a full slate of art programs at Next taught by some of the area's most celebrated artists and noted instructors, such as Karen Halpern, Pete Snodgrass, Diane Bert and Sharon Schlarman. At **Next** you can find classes and studio groups for oils and acrylics, watercolor, pottery, pastels, drawing, photography and more.

And now, **Next** is partnering with the **College for Creative Studies**. World class instructors from this prestigious design school will be coming to **Next** to conduct workshops and classes designed to unleash your creativity.



Your Place to Stay Active & Connected

Formerly Birmingham Area Seniors Coordinating Council (BASCC)

Next is your place for learning: **Next** offers a wide variety of classes and programs to keep you informed and enlightened. From the area's premier lecture series every Thursday night at 6:00 pm where we host experts and professors from local universities speaking on a myriad of interesting topics, to Socrates Café, book groups, Retirement Reimagined and Entrepreneurs' Network, to name just a few, there is sure to be something to pique your interest and keep your mind active.

Next is your place for fitness: There are more ways to keep fit at **Next** than ever before! **Next** offers multiple yoga classes, barre classes, low impact aerobics, chair based exercises, pickleball, golf, bowling and tennis leagues, slow roll biking and more. Get healthy, limber, and fit at **Next**.

There is so much to offer at **Next**, there is no way to list it all here! For more information or to schedule a tour, call **Next** at **248.203.5270**, or log onto **BirminghamNext.org** to see the full listing of classes and programs has to offer. **Next – You Belong Here!**

BE IN THE KNOW!

SIGN UP TO RECEIVE IMPORTANT EMAIL BLASTS

FROM THE VILLAGE

Log on to the Village website www.binghamfarms.org

CLICK ON STAY INFORMED at the bottom of the Home Page and enter in your email address.

LETTER FROM THE PRESIDENT

I love dogs. Dogs are family. What follows are my personal, individual capacity thoughts (me as a resident not as President) on dogs, owners and the Village's ordinances. I also like cats, but my wife is allergic

If you are not willing or in a position to treat a dog as family, you do not deserve a dog. Before you get a dog, learn about the breed. Some are very high energy and require long walks. Some breeds will put up with your kids' nasty friends. Others will not accept abuse. Dogs get old and get injured. If you are not willing to love an infirm dog or can't afford the \$3,000 to \$4,500 it costs for ligament surgery, do not start the journey. Many dogs and owners need dog training (in some cases a lot). That costs both time and money. Residents in Bingham Farms are allowed two dogs, no more. Coyotes and large hawks frequent the Village so think long and hard before you leave a tiny dog outside.

The Village Code imposes a duty to keep dogs under reasonable control. A dog on the owner's occupied property is deemed to be under reasonable control. That means if the owner is sitting on his porch and the dog is sitting quietly at the property line staring at your barbecue, you should learn to like dogs. A dog being walked off premises, however, should be on leash even if it has been trained to military standards. You cannot let your dog run at large (i.e., off the property). Yes, dogs get loose but it is the owner's duty to take adequate preventive measures and no canine escape technique should be permitted to work twice: for example, (i) if your dog slips a collar, get a harness, (ii) if your dog gets through the invisible fence once it will do so again, so you need a new containment method.

Dogs bark but unless they have been ignored or otherwise abused, the barking is not constant, does not stop your neighbor's child from study-

ing for a test for school or keep anyone who has to get up early for work the next morning awake at night. The Village has a broad ordinance declaring loud or unusual noises or sounds and annoying vibrations which offend the peace and quiet of persons of ordinary sensibilities a public nuisance. Additionally you are not allowed to "own any dog which by loud or frequent or habitual barking, yelping, or howling becomes nuisance to occupiers of neighboring property."

Your neighbors are entitled to quiet enjoyment of their property. If your dog does more than say a friendly hello with a polite bark or two every time a neighbor uses their back yard during the day you should be very uncomfortable. I have found small dogs are more likely to be annoying barkers than large dogs. Municipal penalties include impounding the dog and a misdemeanor for the owner but I would also worry about a civil lawsuit.

You are not allowed to own a fierce or vicious dog, or a dog bitten by any animal with rabies. Dobermans, Pitbulls, German Shepherds and other breeds can be gentle if raised in a loving environment. There is no presumption they are problematic nor do the ordinances cater to baseless fears. Any dog, regardless of size or breed, is likely to become vicious if you leave it chained up outside all day without human attention.

The Village may deem a dog fierce or vicious if there is more than one bite report involving the same animal. The ordinance does not restrict the term "bite" to humans and the word "may" means there are cases where biting does not mean the dog is vicious. If a dog bites a mean child in self-defense, I do not see a vicious dog, I see a bad parent. Dogs get into spats with other dogs over who is alpha. If your neighbor's dog trespasses on your property and attacks your pet, you have the option of a civil action if the situation is not otherwise resolved to your satisfaction.

A trained attack dog is silent

and has a deadpan look. The good thing about attack dogs is that the owner is usually trained or there is a professional handler. There is absolutely no excuse for a dog that, though remaining on your property, barks and bares teeth in a threatening manner at every passerby. No matter how old the dog, a good dog trainer can change that behavior, but the problem is the owner. If the dog has a genetic defect making it impossible to train, it is the wrong dog for a suburban environment.

There is something about a nice walk that just gets the digestive track moving. Dog owners need to pick up pup poops on walks. It is not just common courtesy, it is a Village ordinance.

If you have concerns with your neighbor's pet, please talk to them first! Maybe they do not realize there is a problem, that the problem can be cured with training, mitigated by keeping the dog indoors and only taking it outside on leash for bathroom breaks and long walks, or that they have a legal obligation.

Lodging a complaint when your neighbor does not realize there is a problem will breed far more ill will than the discussion. If police involvement is required for a major issue, call 911. For a non-emergency call the Police Department's **non-emergency** telephone number (248.626.5444) so as not to tie-up the 911 lines.

But remember, less serious issues can be resolved by lodging a formal complaint with Animal Control out of Southfield Township (248.540.3420).

It is always better not to force our officers into the middle between neighbors who are all residents.

Sincerely,
Jeffrey D. Modell, Esq.
Village President

NEWS FOR NEW RESIDENTS

For new residents, there's a substantial learning curve as to the do's and don'ts per Village ordinance. The following gives a sneak peek of what you should know.

Home Renovations - any change to the outside of the house usually requires approval from the Design Review Board.

Permits are required for electrical and plumbing as well as roofing. The City of Southfield Building Department issues these permits along with roofing permits. This is per an agreement between the Village and the City of Southfield.

Driveways - any driveway work requires a permit from the Village. This is for new driveways, repair work and sealcoating. If you are putting in a new driveway or extending an existing one, please remember driveway widths cannot exceed 12-feet.

It is always best to check in with the Village office to avoid delays in projects. A simple call can save you time and money.

Signs
Contractor signs ARE NOT ALLOWED.

Political Signs are allowed on residential properties. They must be removed within 5 days after the election.

Recycling
The Village contracts with SOCRRA (Southeastern Oakland County Resource Recovery Authority) to handle the Village's Recycling materials and Household Hazardous Waste. The facility is located on Coolidge Rd. in Royal Oak. It is between 14 Mile & Maple Rd. See more recycling news on Pg. 7.

Rubbish Pick Up
Rubbish pick up is on Thursdays. Have trash cans at the road by 7:00 a.m.

Email Blast - The Village uses an email blast system to inform residents of important news. Go to the Village website at www.binghamfarms.org and click on the Stay Informed icon at the bottom of the homepage.

Tree & Woodland Protection
The Village has a Tree and Woodland Protection ordinance. Consult the Ordinance (it's online). Any questions, call the Village office at 248.644.0044.

Mobile Watch
Members of Mobile Watch routinely tour the Village roads looking for anything "unusual". All residents are invited to join. Mobile Watch meets on the first Wednesday of each month. at 7:30 p.m. Mobile Watch meets in the Clubhouse of Bingham Woods Condos.

VOLUNTEERS NEEDED

There's a transition occurring in the Village, an influx of younger families. There's something about the sound of children playing and at times arguing.

This transition gives the Village the opportunity to hear why these families chose to live in Bingham Farms and get a feel for what they are looking for in the future.

One way to get this input, is for someone in these families to volunteer by serving on one of the Village Boards, even Council. It's a necessary fact to

have younger folks move in so the older folks can move on to other activities.

Did you know that some of our volunteers have served in various capacities for over 20 years? They do this because they love the Village and want to keep it strong.

Volunteering is not time intensive The Village Council, the Design Review Board and the Planning Commission all meet once a month; all start at 7:30 p.m..

Village Council - 4th Monday
Design Review Board - 1st Monday
Planning Commission - 2nd Monday
Council meetings run approximately 90 minutes. Planning Commission and Design Review Board meetings typically run about 60 minutes.
Applications are available on the Village website

www.binghamfarms.org
Should you have any questions, call the Village Clerk at 248.644.0044.

**NEED TO DISPOSE OF UNUSED
PRESCRIPTION MEDICINE?
TAKE IT TO THE
FRANKLIN BINGHAM POLICE DEPT.
32325 FRANKLIN ROAD
(across from the Franklin Post Office)**

**FIRE & POLICE
NUMBERS**
EMERGENCY 9-1-1
DISPATCH 248-626-5444
POLICE DEPT. 248-626-9672
FIRE DEPT. 248-626-9862

BALDWIN LIBRARY EVENTS

“The Spooky Halloween Magic Show” with Gordon Russ the Magician

Sun., Oct. 18 at 3 p.m.

*Registration required for magic show.

Stop by Baldwin to celebrate the Annual Birmingham Pumpkin Patch with a magic show and crafts in the youth room from 1-4 p.m. Afterwards, head over to the Halloween Parade at 4 p.m.

NaNoWriMo Writing Workshop with author John C. Ford

Thurs., Oct. 29 from 7 to 8 p.m.

Grades 6-12 Registration required*

National Novel Writing Month, shortened as NaNoWriMo, is an annual creative writing project that challenges participants to write 50,000 words in November. Get prepped to participate with John C. Ford, author of the young adult books *The Morgue and Me* and *The Cipher*.

When Germs Travel: Contagious Crises Across History

with Dr. Howard Markel

Sat., Nov. 21 at 3 p.m. Registration required*

Join us for a lecture by acclaimed medical historian, Dr. Howard Markel as he provides an eye-opening look at the fragility of our public health system and the human stories of those affected by contagious crises.

BOOKS & BITES: EAT, DRINK, PLAY

Fri. Nov. 13 from 6:00- 9:00 p.m. Tickets are \$75

Support the library while enjoying a strolling dinner, a selection of beers and wines, live music, a raffle-style auction, and casino games for your entertainment. Visit

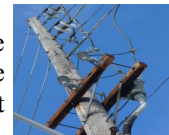
www.baldwinlib.org/bookandbites for more information and to purchase tickets to the event.

Find more information about the Library and its programs on our website at www.baldwinlib.org.

BE PREPARED

It seems Bingham Farms and some of our surrounding areas are the target areas for power outages. Parts of Bingham Farms have lost power four times since April.

It is imperative for every person to call in to DTE and report their outage. The more calls they receive, the better idea they have of the extent of the outage. Do Not assume your neighbor has called it in. Everyone should. The number is **800-477-4747** or via computer at **dteenergy.com** and click on Report Power Outage.



Here are some helpful hints to make sure you are ready for the next outage.

- Check the batteries in all your flashlights to make sure they work.
- If you have portable generators, make sure they are in good condition and ready to be fired up. Place them in an open area so no carbon monoxide enters your home.
- Have at least a 3-day supply of water in case there is an interruption.
- Disconnect your major appliances so they won't succumb to a power surge when the power returns.

This last storm created many dangerous situations in several areas of the Village. The weather folks say a lot of the damage was caused by a microburst, a downdraft in a thunderstorm.

Cont. on Pg. 7

RIPARIAN WORKSHOP FULL OF INFORMATION

Friends of the Rouge in conjunction with the Alliance of Rouge Communities hosted a 2-hour workshop for residents who abut a waterway. It was held at the Franklin Community Church, right in downtown Franklin.

The Village has the Franklin Branch of the Rouge meandering through parts of the Village. The Village also has a stream on the north end of the Village called Snow Creek.



There is very little public access to these water sources. That means it is up to the private property owner to take care of this resource. This includes clearing log jams and protecting the streambank.

Often, riparian property owners will plant grass right to the streambank. This creates a dual problem. The first is it allows any chemicals placed on the lawn to flow freely into the water way. Secondly, it contributes to erosion of the streambank.

Two recommendations were provided:

1. Using native plants within 10-15 feet of a streambank. Native plants have deep roots which can stabilize a streambank. Native grasses also have deep root systems.

2. Planting trees also provides protection.

Go to the Friends of the Rouge website to get other ideas to keep our waterways clean.

www.therouge.org

Cont. from Pg. 1 Winter Maintenance

roads, when necessary, to make travel less challenging. However, this is Michigan. Conditions can change in a matter of hours. Drive with care.

Violations can result in tickets being issued. Remember however, our police take no pleasure in writing tickets to residents. The primary goal is to keep the streets safe for everyone.

SEVERAL ROUGE FRIENDLY ACTIVITIES ON TAP

As usual, Friends of the Rouge has been really busy, what with workshops and fun activities bringing people to explore the Rouge River.



They are a volunteer, non-profit organization committed to cleaning up the Rouge River and improving its habitat. Many of their activities help the Village meet its obligations under the Stormwater Permit issued by the Michigan Department of Environmental Quality.

And their work is showing results. Last month, another fish species was identified. The Iowa darter is a small, fast, beautiful fish that is sensitive to pollution. They breed in aquatic plants which are rare in the Rouge watershed. They were found in a tributary of the Walled Lake branch in Novi that had at least three types of suitable aquatic plants.



Just recently, they put together a workshop held right next door to us at the Franklin Community Church. It was a great presentation showing residents what they can do to enhance the beauty of the Rouge.

There are a few more activities coming up, specifically their Fall Bug Hunt. It will take place on October 17th, that's Saturday. Besides looking for certain species of bugs in the Rouge, it's an opportunity to get out and enjoy nature.

For more information on these and other Rouge activities log on to their website, www.therouge.org or call 313.792.9621.

WHAT'S THE HURRY?

Here's some food for thought. Why are so many people in such a rush that they totally forget about speed limits or stop signs? Take for instance people driving down Bingham Rd. The speed limit is 25 mph. The road is pretty busy, especially in the morning and late afternoon.

Periodically, our police department sits along Bingham Rd. or one of its off-streets to monitor speed and adherence to stop signs. They issue tickets quite regularly.



It's been compounded by the construction on Lahser. But it's not always the cut-through traffic. It's our own residents.

It's also not uncommon for drivers to push oncoming cars further to the side of the road because they don't want to wait for walkers to get by. The drivers just squeeze between the walkers and oncoming cars. This might save them a few seconds but it jeopardizes everyone's safety. Kindly slow down.

JOIN THE VILLAGE MOBILE WATCH
New members always welcome.

Meetings are the first Wednesday of each month at 7:30 p.m. at the Bingham Woods Clubhouse located at 30760 River Crossing.

Hear a valuable police report of the month's activities. Meet the reporting police officer and ask any question you may have.

ROAD CONSTRUCTION UPDATE

Who would have thought one road construction project could create such havoc?

The first stage of the Lahser Rd. drainage and reconstruction project didn't raise too many traffic issues. However, the second stage, between Thirteen & Fourteen Mile Roads has been difficult.

Drivers are seeking any cut-through to avoid backups. Not only in Beverly Hills but in Bingham Farms too.



Thanks to our police department and the extra enforcement, speeds on Bingham Road and Fourteen Mile Rd. seem to be under control. In the last month, approximately 65 tickets were issued for speeding and running stop signs.

The latest info is that Lahser Rd. will reopen to traffic on November 1st. There is always hope. We'll just have to wait and see.

The entire project, including restoration, may have to wait until Spring.

However, don't get too excited. Evergreen Road, between 13 & 14 Mile Road will be closed immediately after Lahser reopens. Beverly Hills has emergency work due to the collapse of a dam on the west side of Evergreen at the bridge. The road is expected to be closed for just a week or so.

At least Lahser will be open right?

SIGN UP FOR EMAIL BLASTS

www.binghamfarms.org

Click on STAY INFORMED

at bottom of Home Page

RECYCLING NEWS

There are actually two ways for residents to recycle.

Roadside Pick Up

Roadside Pick Up is a weekly service provided by the Village.

Residents place recyclables in a bin. Items do not have to be separated as the hauler separates items at the street.

Acceptable materials are:

- Most plastic
- Glass Bottles including green glass wine bottles
- Aluminum Cans
- Magazines
- Hard Cover & Paperback books
- Phone Books
- Newspapers

Drop Off Recycling - 995 Coolidge Rd., Royal Oak, MI (across from

Cont. from Pg. 5 Are You Prepared?

These can cause as much damage as a tornado.

Our police and fire departments are extremely busy during power outages. Please do not call them to find out when the power will be back on. They have no more information than anyone else.

REMEMBER! Everyone call in your power outage at **800-477-4747**

Meijer. Here's what they take:

Scrap Metals

- Metal lawn chairs
- Metal Pipes
- Microwaves
- Metal & Screen Doors

Fiber

All paper, paperboard and cardboard (including corrugated cardboard)

Self Serve Large Capacity Paper Shredding—remove paper clips
No hard binders

Hazardous Waste

Call for an appointment **248.288.5153** or go online at socrra.org

Empty propane tanks
Lawn fertilizers
Motor Oil

Cont. from Pg. 1 New Zoning Ordinance

or installing a gate, fence or wall. A variance may or may not be granted. An applicant must meet all 5 requirements to receive a variance.

If a resident does erect such a structure without obtaining a variance, the Village will require its immediate removal.

Oil based paints and stains
Fertilizers

LATEX PAINT IS NOT A HAZARDOUS WASTE PRODUCT.

Simply dry out the paint or use kitty litter to soak up the paint. Then place the open can beside your trash can for regular disposal.

Styrofoam is not a recyclable product. Cut into pieces and use as fill when mailing packages. Otherwise throw it into the regular trash.

For more information, log on to the [SOCRRA](http://www.socrra.org) website at

www.socrra.org

**LIVE CHRISTMAS TREE
DISPOSAL
WITH REGULAR RUBBISH
PICK UP
THROUGH
JANUARY 14th**

BURNING LEAVES IS ALLOWED IN THE VILLAGE

Regulations (Chapter 50.02)

1. Do not burn leaves, grass or rubbish on any paved or bituminous surfaced street;
2. Do not burn any type of refuse where smoke, ashes or odor will create a nuisance, public or private;
3. Do not burn rubbish closer than 15 feet to a building;
4. **Do not leave a fire unattended.**

Any questions, call the Village office at 248-644-0044.



LARGE ITEM PICK UP REGULATIONS

Date: Thursday, October 15, 2015

Time: All items at street by 7:00 a.m.

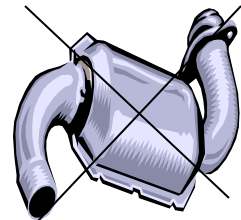
ACCEPTABLE ITEMS

- Large appliances, furniture and hot water heaters
(Refrigerators & freezers must have Freon removed prior to placement at the street)
- Only small tree stumps
- Brush and tree branches must be bundled and the length should not exceed four feet
- Rolls of carpet and linoleum must be tied together with the length not to exceed four feet
- Disposal of construction materials is limited to **one** 32-gallon trash container



UNACCEPTABLE ITEMS

- Large tree stumps
- Hazardous waste
- Tires
- Automotive parts
- Loose gravel
- Large amounts of construction material & loose items



Large items such as appliances and furniture may be placed at the street the weekend before the pick up.

Car Trucking has the right to refuse to pick up excessive amounts of materials. If you have a large quantity of items, please call Car Trucking at 586-791-8480 and make special arrangements to rent a dumpster.

CHANGE YOUR CLOCKS! CHANGE YOUR BATTERIES!

Spring forward and fall back. This time of year is when we can garner an extra hour of sleep.

Turn your clocks back one hour on **November 1st**. Or as many do, turn them back before you go to bed on Saturday night. Eastern Standard Time begins at **2:00 a.m. November 1st**.



Unfortunately, it also means that shorter days are coming and another Michigan winter is not far away.

While changing your clocks, remember to change the batteries in your smoke detectors and carbon monoxide detectors.

Be proactive. Take a few minutes to make sure all your detectors are working. It might not just save your house, it may also save YOU.

WILL YOUR MAILBOX HOLD UP THIS WINTER?

There's an easy test. If your mailbox is on a post, just shake the mailbox. If the mailbox or post is loose, take the time now to tighten screws and secure the posts.

Every winter there are a few residents who complain that the snowplow knocked over their mailbox. Eric Wilson, Chairman of the Road Commission says "In most cases, the snowplow doesn't actually hit the mailbox. The force of snow thrown from the roadway is enough to knock down a loose mailbox".



So, if you're putting up a new roadside mailbox, it should be 36 to 42 inches off the ground and the post should be 8 to 12 inches behind the shoulder or curb. The mailbox should not protrude into the road.

NEIGHBORING COMMUNITIES OFFER SEASONAL ACTIVITIES

Birmingham

Farmers' Market - North Old Woodward
Sundays thru 10/18 9:00 a.m. - 2:00 p.m.

Open Skating - Ice Arena 2300 E. Lincoln. Call 248.530.1640 for open skate times.

22nd Annual Birmingham Pumpkin Patch & Halloween Parade Oct. 18 1:00 - 4:00 p.m. at the Community House. Little ghouls and goblins also can take part in the parade.

Baldwin Library Book Sale - Nov. 7-9 call library for times 248.647.1700

Holiday Tree Lighting Shain Park Nov. 25 6:00 p.m.
Santa House Shain Park 11/25 - 12/24

"Winter Market" Shain Park 12/4-12/6

Franklin

Cider Mill - Franklin Rd. & Fourteen Mile
Open thru November 29 Weekdays - 7:00 a.m. to 6:30 p.m.
Weekends - 8:00 a.m. to 6:30 p.m.

MUNICIPAL OFFICES

HOLIDAY CLOSURES

**Bingham Farms - November 26 & 27
- December 24 - January 1**

**Southfield Twp. - November 26 & 27
- December 24, 25 & 28
- December 31 & January 1**

Both offices reopen January 4, 2015.

The Bingham Farms Post is published quarterly by the Village of Bingham Farms.

Editor: Kathryn Hagaman
clerk@binghamfarms.org

The next edition of the Post is scheduled for January, 2016. Deadline for submission of articles is December 15, 2015.

All articles must be submitted in writing to the Village office. The editing of articles is at the sole discretion of the staff.

Website: www.binghamfarms.org